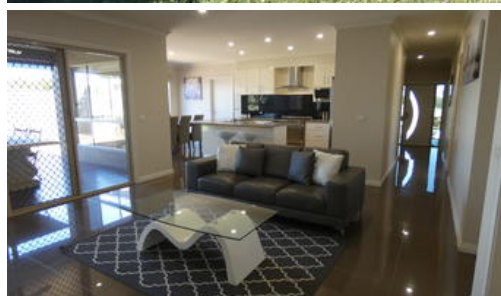


Sold



20 Tower Hill Court, Kalimna



BEAUTIFUL HOME WITH OCEAN VIEWS

Nestled on Tower Hill Court Kalimna is this gorgeous and immaculate 4 bedroom, 3 living room home. Featuring a stunning floorplan and views out over the lakes and ocean, this home could definitely be your next dream home. The open plan kitchen/dining/living area is bright and spacious, with contemporary gloss tiled floors adding an air of opulence to the room and reflecting the well designed lighting, the kitchen features a large 900mm gas cooktop with electric oven, dishwasher and a breakfast bar. The main lounge also opens out to a large alfresco area with ceiling fan and blind for those summer entertaining occasions. There is a second living room at the front of the home and a huge rumpus room at the rear. The home has 4 bedrooms, the Master featuring a WIR and ensuite and the remaining bedrooms being spacious and bright all have BIRs. There is a double garage at the front of the home with remote roller door, internal entry to the home and also a rear access roller door allowing security for your vehicles and also access to the backyard, a garden/tool shed with concrete floor and power, vegetable garden and 2000lt rainwater tank help make this home ready to move in and relax. Hot water is supplied by a solar/electric HWS and heating and cooling is performed by two R/C split

4 2 2

Price SOLD for \$410,000
Property Type residential
Property ID 651
Land Area 741 m2

Agent Details

Yvette McCartney - 0400 512 659

Office Details

East Gippsland & Lakes Real Estate
32 Service Street Bairnsdale VIC
3875 Australia
03 5156 8562



The above information provided has been furnished to us by the vendor/s. We have not verified whether or not that information is accurate and do not have any belief in one way or the other in its accuracy. We do not accept any responsibility to any person for its accuracy and do no more than pass it on. All interested parties should make and rely upon their own inquiries in order to determine whether or not this information is in fact accurate.