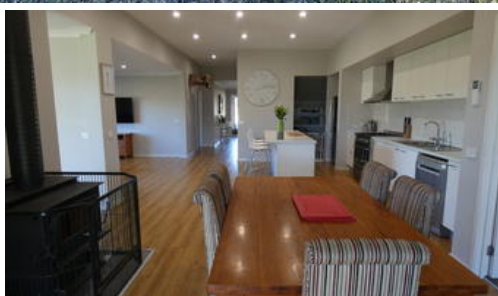


Sold



3 Koraleigh View, Nicholson



BEAUTIFUL HOME ON 1.6 ACRES

Set on just over 1.6 acres in the beautiful Riverbend Estate, Nicholson is this quality 4 bedroom home. Upon stepping inside the front door you are greeted with an ultra wide hallway with raised ceilings looking through the home and creating a channel of natural light that embraces all the main living areas. There are 3 large bedrooms off to the left, all with built in robes, plus a third living area or study, family bathroom and a large separate powder room. To the right of the hallway is the spacious laundry with multitudes of storage. The open plan kitchen/dining/living area is the central heart of the home and it is fabulous, it is where this home really shines. The kitchen features a massive walk in pantry, breakfast bar, quality stainless steel electric oven with 5 burner gas cooktop and stainless steel dishwasher. Feeding off the family oriented kitchen is a multi purpose room, living room and dining room which also leads out to an undercover alfresco area. At the rear of the home offering peace and quiet from the rest of the family is the Master bedroom, with walk through robe and huge ensuite with twin vanities and separate toilet. The land encircling the home is enormous, featuring a large 7m x 12m shed with 2 roller doors, concrete floor and power, a wood shed, rainwater collection tank with its own pump and plenty

4 2 4

Price	SOLD for \$525,000
Property Type	residential
Property ID	630
Land Area	1.60 ac
Floor Area	296 m2

Agent Details

Yvette McCartney - 0400 512 659

Office Details

East Gippsland & Lakes Real Estate
32 Service Street Bairnsdale VIC
3875 Australia
03 5156 8562



The above information provided has been furnished to us by the vendor/s. We have not verified whether or not that information is accurate and do not have any belief in one way or the other in its accuracy. We do not accept any responsibility to any person for its accuracy and do no more than pass it on. All interested parties should make and rely upon their own inquiries in order to determine whether or not this information is in fact accurate.