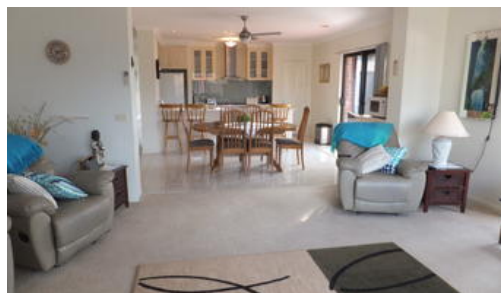


Sold



8 Riviera Close, Paynesville



MAGNIFICENT HOME & SHEDDING

Stunning property located in an exclusive and quiet cul de sac amongst quality homes and on a roomy 948m² block of land. Offering a large 4 bedroom home, Master bedroom with WIR and spacious ensuite, 2nd and 3rd bedrooms with BIRs and 4th bedroom will easily convert to media room if required, there is also a separate large study/office. Beautiful galley style kitchen with 900mm stainless steel stove, gas cooktop/electric oven, pantry, breakfast bench, Caesar stone bench tops. Adjoining is the roomy dining area which flows through to the large main lounge room with r/c split system, and ducted natural gas heating throughout the home. There is a completely separate 2nd lounge room. The property features a large undercover outdoor alfresco entertaining area, fabulous established gardens, dual driveways – one to access the extra large double garage and the other driveway leads through lock up gates to the 10m x 6.8m colourbond shed with 2 roller doors, large workshop, concrete floor and power. Other features include a fernery, solar/gas hot water, 2,500lt rainwater tank for gardens. A truly spectacular property, inspections invited with Yvette at East Gippsland & Lakes Real Estate on 0400 512 659.

4 2 4

Price	SOLD for \$530,000
Property Type	residential
Property ID	563
Land Area	948 m ²

Agent Details

Yvette McCartney - 0400 512 659

Office Details

East Gippsland & Lakes Real Estate
32 Service Street Bairnsdale VIC
3875 Australia
03 5156 8562



The above information provided has been furnished to us by the vendor/s. We have not verified whether or not that information is accurate and do not have any belief in one way or the other in its accuracy. We do not accept any responsibility to any person for its accuracy and do no more than pass it on. All interested parties should make and rely upon their own inquiries in order to determine whether or not this information is in fact accurate.