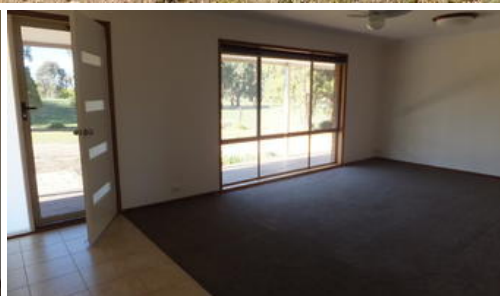


Sold



14 Phillips Lane, Bairnsdale



7 ACRE HOBBY FARM, 2 MINUTES TO TOWN

REDUCED - VENDOR WANTS A SALE

This large brick veneer home comprises of 4 bedrooms, 2 bathrooms, study and office with powder room. It is a great family home on 7 acres in Lucknow. Lovingly maintained it has dado pine feature walls in the kitchen/dining and hallway, with a large separate living area. The kitchen/dining has 900mm freestanding s/s electric oven and 5 burner gas cooktop, a dishwasher and walk in pantry, a wood fire Bakes Oven and a r/c split system. With hydronic heating in 3 bedrooms and the study to keep you warm. Wide verandas on 3 sides of the home with fabulous rural views. A 20m X 7 m shed with concrete floor and power, 2 single carports, a wood shed, a garden shed and a chook pen. The land is fairly flat with a good size dam, an orchard and 2 paddocks, ideal for a few horses or many hobby farming pursuits. There is the added bonus of a 3.5kw solar system which reduces power bills. This property would be perfect for a growing family. For further information call Yvette at East Gippsland & Lakes Real Estate on 0400 512 659.

The above information provided has been furnished to us by the vendor/s. We have not verified whether or not that information is accurate and do not have any belief in one way or the other in its accuracy. We do not accept any responsibility to any person for its accuracy and do no more than pass it on. All interested parties should make and rely upon their own inquiries in order to determine whether or not this information is in fact accurate.

 4  2  8

Price SOLD for \$560,000

Property Type residential

Property ID 562

Land Area 6.90 ac

Agent Details

Yvette McCartney - 0400 512 659

Office Details

East Gippsland & Lakes Real Estate
32 Service Street Bairnsdale VIC
3875 Australia
03 5156 8562

