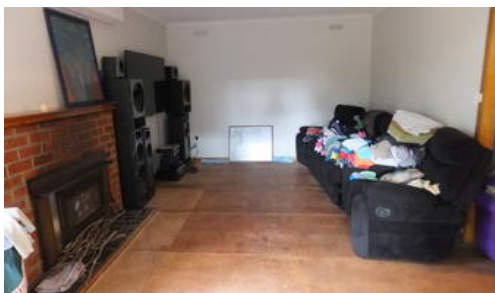
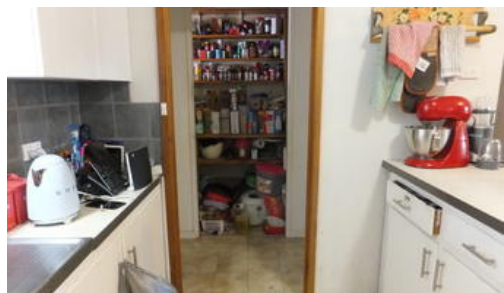


Sold



9 Hallier Court, Nicholson



98.89 ACRES 3 BEDROOM HOME & GREAT SHEDDING

98.8 Acres approx. in Nicholson is perfectly located, just 15 minutes from Bairnsdale. Being very tranquil and peaceful, the land is flat to gently undulating and would suit most hobby farm pursuits. Town water, sealed road to gate, excellent shedding with concrete floor and power, one shed being 14m x 10m and the other 4m x 10m. This type of property is hard to find in this great location. The cosy 3 bedroom home needs a bit of TLC, basically a few coats of paint, new floor coverings and some handyman skills are required, however the potential is great. A verandah runs the full length of the home and takes in delightful rural views. Nearby is the East Gippsland Rail Trail for safe horse riding, Nicholson Primary School, General Store, Pub and the beautiful Nicholson River. For further information call Yvette at East Gippsland & Lakes Real Estate on 0400 512 659.

The above information provided has been furnished to us by the vendor/s. We have not verified whether or not that information is accurate and do not have any belief in one way or the other in its accuracy. We do not accept any responsibility to any person for its accuracy and do no more than pass it on. All interested parties should make and rely upon their own inquiries in order to determine whether or not this information is in fact accurate.

3 1 4

Price SOLD for \$505,000
Property Type residential
Property ID 541
Land Area 98.80 ac

Agent Details

Yvette McCartney - 0400 512 659

Office Details

East Gippsland & Lakes Real Estate
32 Service Street Bairnsdale VIC
3875 Australia
03 5156 8562

