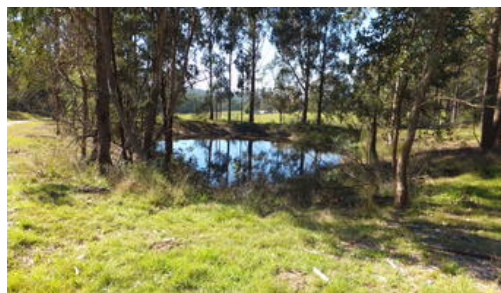


Sold



94 Eleven Mile Road, Sarsfield



113 ACRES, NATURE LOVERS & OUTDOOR ADVENTUROUS

PLANNING PERMIT NOW ISSUED BY THE EAST GIPPSLAND SHIRE. YES YOU CAN BUILD ON THIS BLOCK.

113 Acres located 15 minutes from Bairnsdale, mostly bush with approx. 10 Acres of cleared grazing at the entrance and a dam. Vehicle & motorbike tracks meander through the bush, this property will suit the outdoor adventurous or nature lover. The land is undulating and offers a huge array of wildlife and bird life, including a beautiful tree fern gully with natural spring. Let your imagination run wild, there is plenty of fun to be had on this beautiful piece of land. For further information call Yvette at East Gippsland & Lakes Real Estate on 0400 512 659.

The above information provided has been furnished to us by the vendor/s. We have not verified whether or not that information is accurate and do not have any belief in one way or the other in its accuracy. We do not accept any responsibility to any person for its accuracy and do no more than pass it on. All interested parties should make and rely upon their own inquiries in order to determine whether or not this information is in fact accurate.

Price SOLD for \$250,000
Property Type residential
Property ID 519
Land Area 457,294 m2

Agent Details

Yvette McCartney - 0400 512 659

Office Details

East Gippsland & Lakes Real Estate
32 Service Street Bairnsdale VIC
3875 Australia
03 5156 8562

