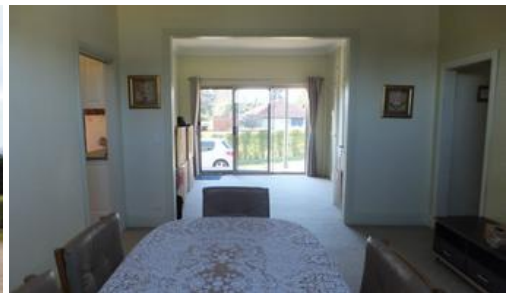




35 Princes Highway, Bairnsdale



RENOVATED COUNTRY HOMESTEAD CLOSE TO TOWN

Renovated country homestead with character features, built on 1255m² block approx, fabulous Princes Highway exposure. Walk to work, the shops or the Mitchell River. This home has 3 bedrooms plus a study, 2 living areas, beautiful bright kitchen which has been updated featuring an island bench, stainless steel appliances, corner pantry and appliance cupboard. There are 2 r/c split systems and 2 open fireplaces that add to the character of this home. The master bedroom has WIR and ensuite, the 2nd bedroom has a BIR, the third has an open fireplace. There are 2 decks one off the 2nd living area and one off the master bedroom. Outside is the amazing undercover back deck, there is a separate outdoor bbq room with sink, power and lighting, a fernery with a pond, views across to the Mitchell River flats and Eastwood, large colourbond shed 8m x 8m with power & light, you can drive through the block to the back lane for easy access with your boat or caravan and there is rear lane access into the backyard. A 2kw solar system which feeds back to the grid. This would suit both 1st home buyers and investors as it is currently tenanted for \$300 per week until November 2017. Call Yvette for further information on 0400 512 659 at East Gippsland & Lakes Real Estate.

The above information provided has been furnished to us by the vendor/s. We have not verified whether or not that information is accurate and do not have any belief in one way or the other in its accuracy. We do not accept any responsibility to any person for its accuracy and do no more than pass it on. All interested parties should make and rely upon their own inquiries in order to determine whether or not this information is in fact accurate.

3 2 1

Price SOLD for \$262,000
Property Type residential
Property ID 440

Agent Details

Yvette McCartney - 0400 512 659

Office Details

East Gippsland & Lakes Real Estate
 32 Service Street Bairnsdale VIC
 3875 Australia
 03 5156 8562

